

High Yield Aquifers in the Town of Livingston

~ Hydrologic Divide

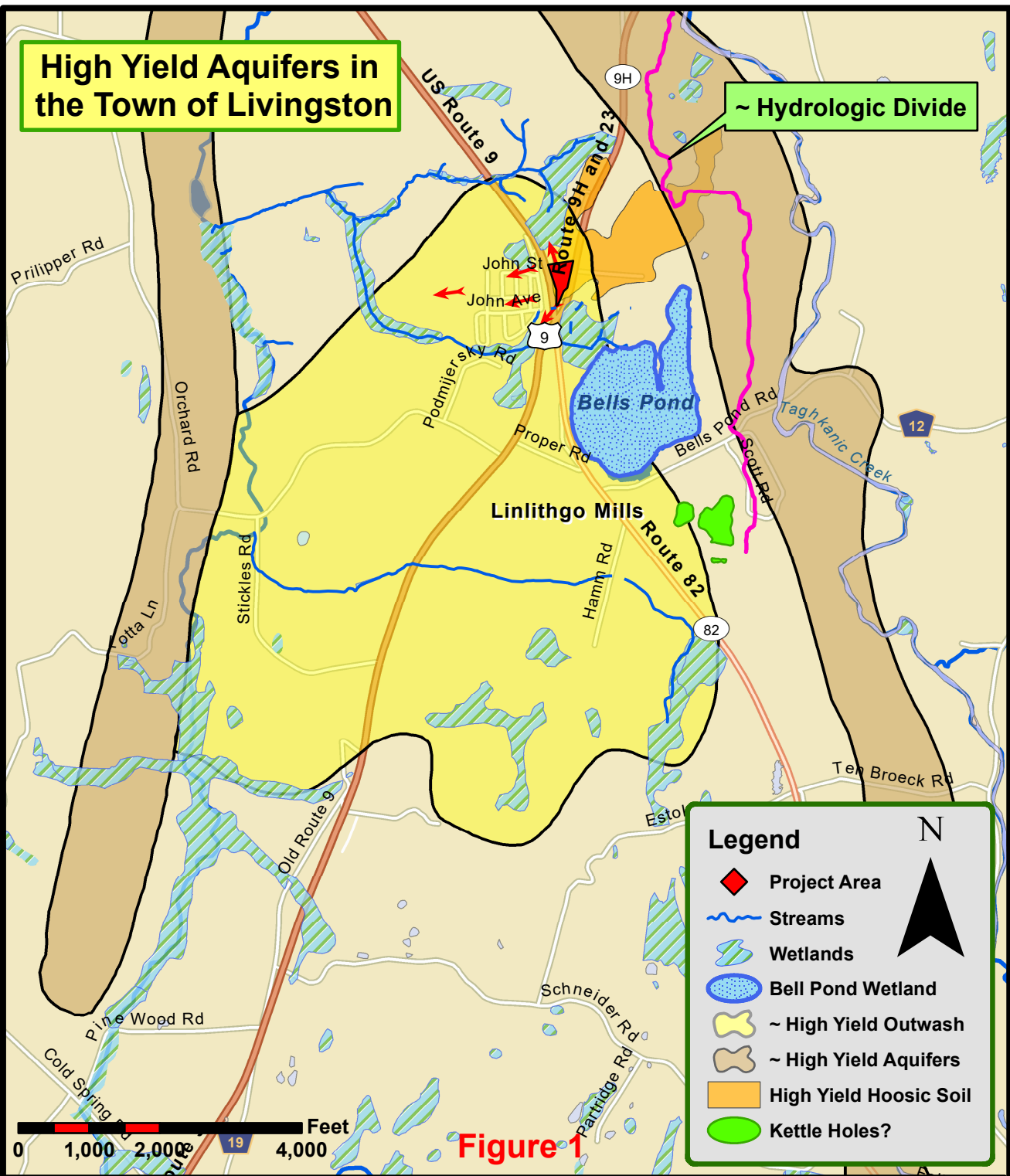


Figure 1

Development projects designed to discharge partially treated stormwater and septic contaminants into the subsurface require detailed hydrogeologic characterization – both onsite and offsite. This has not been conducted at the Alltown Café site. The proposed project site is particularly vulnerable to contaminant inputs because it overlies a highly permeable, high yield, sand and gravel aquifer that provides source water to numerous wetlands, as well as Mud and Taghkanic Creeks. Geologically and hydrologically, permeable glacial outwash sediments (yellow) that underlie the project site are connected to other highly permeable glacial drift aquifers (brown) that should be protected from contamination (e.g., miscible, untreated, hydrocarbons). HydroQuest graphic. 3-05-19