



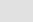
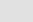
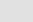

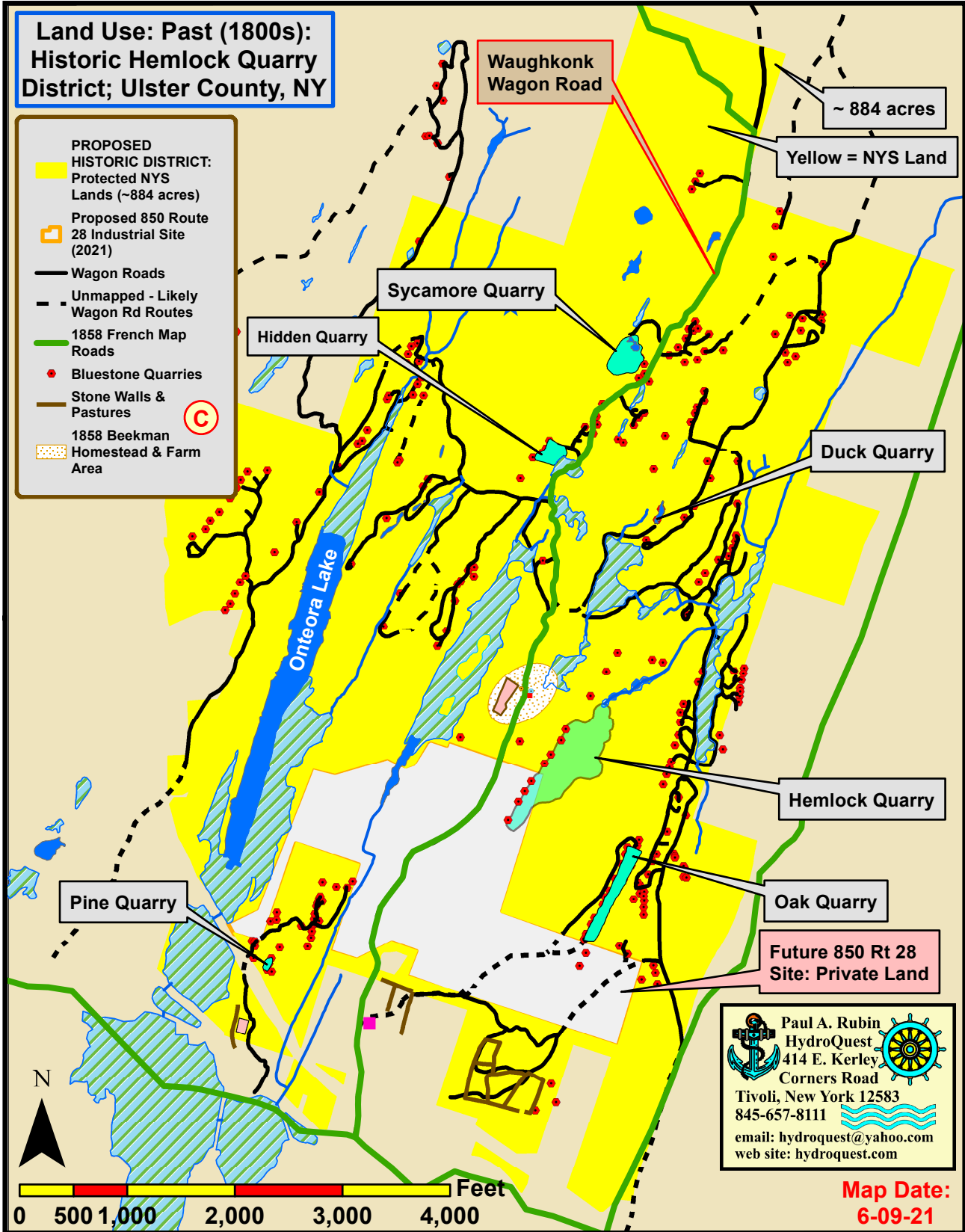


**Land Use: Past (1800s):  
Historic Hemlock Quarry  
District; Ulster County, NY**

-  PROPOSED HISTORIC DISTRICT: Protected NYS Lands (~884 acres)
-  Proposed 850 Route 28 Industrial Site (2021)
-  Wagon Roads
-  Unmapped - Likely Wagon Rd Routes
-  1858 French Map Roads
-  Bluestone Quarries
-  Stone Walls & Pastures
-  1858 Beekman Homestead & Farm Area



 Paul A. Rubín  
 HydroQuest  
 414 E. Kerley  
 Corners Road  
 Tivoli, New York 12583  
 845-657-8111   
 email: hydroquest@yahoo.com  
 web site: hydroquest.com

**Map Date:  
6-09-21**